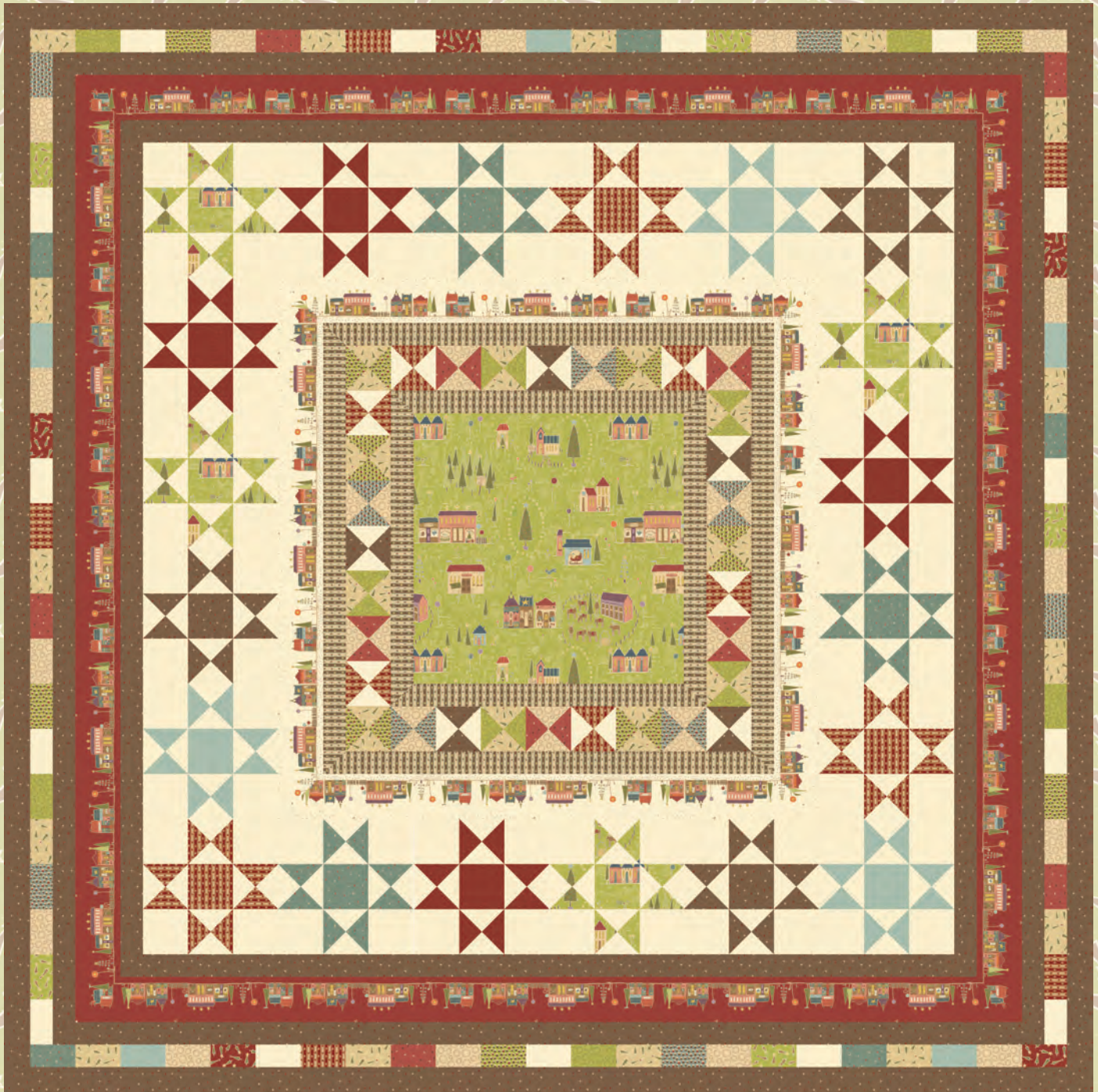


Hometown Holiday

Pieced Quilt



A Free Project Sheet From

 **Henry Glass & Co., Inc.**



facebook

Finished Quilt Size: 72" x 72"
49 West 37th Street, New York, NY 10018
tel: 212-686-5194 fax: 212-532-3525
Toll Free: 800-294-9495
www.henryglassfabrics.com

HOMETOWN HOLIDAY

Finished Quilt Size: 72" x 72"

Pieced Quilt

Fabrics in the Collection



8146-66

Green Wreaths



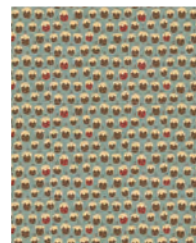
8146-44

Cream Wreaths



8145-66

Green Sugar Plums



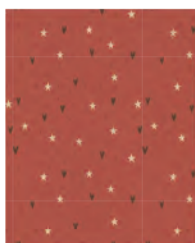
8145-11

Blue Sugar Plums



8144-38

Brown Stars & Hearts



8144-22

Red Stars & Hearts



8144-11

Blue Stars & Hearts



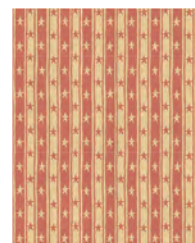
8143-88

Red Stripe



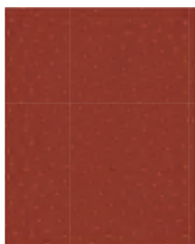
8143-38

Brown Stripe



8143-22

Peach Stripe



8142-88

Red Pin Dots



8142-44

Cream Pin Dots



8142-11

Blue Pin Dots



8141-88

Red Tossed Trees



8141-66

Green Tossed Trees



8141-44

Cream Tossed Trees



8140-88

Red Novelty Stripe



8140-44

Cream Novelty Stripe



8139-66

Large Novelty

Materials

$\frac{5}{8}$ yard	Large Novelty	8139-66
$\frac{5}{8}$ yard	Brown Ticking Star Stripe	8143-38
$\frac{1}{3}$ yard	Cream Tossed Trees	8141-44
$\frac{1}{4}$ yard	Green Sugar Plums	8145-66
$\frac{1}{3}$ yard	Red Ticking Star Stripe	8143-88
1 $\frac{3}{4}$ yards	Cream Pin Dots	8142-44
$\frac{1}{3}$ yard	Cream Wreaths	8146-44
$\frac{1}{4}$ yard	Red Stars and Hearts	8144-22
$\frac{1}{4}$ yard	Green Wreaths	8146-66
2 $\frac{1}{4}$ yards	Brown Stars and Hearts	8144-38
$\frac{1}{4}$ yard	Blue Sugar Plums	8145-11
1 $\frac{1}{8}$ yards	Cream Novelty Stripe	8140-44
$\frac{1}{3}$ yard	Red Pin Dots	8142-88
$\frac{1}{3}$ yard	Blue Stars and Hearts	8144-11
$\frac{1}{3}$ yard	Blue Pin Dots	8142-11
2 yards	Red Novelty Stripe	8140-88
$\frac{1}{8}$ yard	Red Tossed Trees	8141-88
$\frac{1}{8}$ yard	Green Tossed Trees	8141-66
4 $\frac{1}{2}$ yards	Backing (Your Choice)	

Cutting Instructions

Please note: all strips are cut across the width of fabric (WOF) from selvage to selvage edge.

From the Large Novelty (A), cut:

- (1) 18 $\frac{1}{2}$ " square
- (1) 4 $\frac{1}{4}$ " x WOF strip. Sub-cut the strip into (8) 4 $\frac{1}{4}$ " squares.
- (1) 3 $\frac{1}{2}$ " x WOF strip. Sub-cut the strip into (4) 3 $\frac{1}{2}$ " squares.

From the Brown Ticking Star Stripe (B), cut:

- (4) 2" x 23" strips.
- (4) 2" x 33" strips.

From the Cream Tossed Trees (C), cut:

- (1) 4 $\frac{1}{4}$ " x WOF strip. Sub-cut the strip into (6) 4 $\frac{1}{4}$ " squares.
- (1) 3 $\frac{1}{2}$ " x WOF strip. Sub-cut the strip into (15) 2" x 3 $\frac{1}{2}$ " strips.

From the Green Sugar Plums (D), cut:

- (1) 4 $\frac{1}{4}$ " x WOF strip. Sub-cut the strip into (3) 4 $\frac{1}{4}$ " squares and (5) 2" x 3 $\frac{1}{2}$ " strips.

From the Red Ticking Star Stripe (E), cut:

- (1) 4 $\frac{1}{4}$ " x WOF strip. Sub-cut the strip into (9) 4 $\frac{1}{4}$ " squares.
- (1) 3 $\frac{1}{2}$ " x WOF strip. Sub-cut the strip into (3) 3 $\frac{1}{2}$ " squares and (5) 2" x 3 $\frac{1}{2}$ " strips.

From the Cream Pin Dots (F), cut:

- (6) 4 $\frac{1}{4}$ " x WOF strips. Sub-cut the strips into (46) 4 $\frac{1}{4}$ " squares.
- (7) 3 $\frac{1}{2}$ " x WOF strips. Sub-cut the strips into (80) 3 $\frac{1}{2}$ " squares.
- (1) 3 $\frac{1}{2}$ " x WOF strip. Sub-cut the strip into (15) 2" x 3 $\frac{1}{2}$ " strips.

From the Cream Wreaths (G), cut:

- (1) 4 $\frac{1}{4}$ " x WOF strip. Sub-cut the strip into (6) 4 $\frac{1}{4}$ " squares.
- (1) 3 $\frac{1}{2}$ " x WOF strip. Sub-cut the strip into (15) 2" x 3 $\frac{1}{2}$ " strips.

From the Red Stars and Hearts (H), cut:

- (1) 4 $\frac{1}{4}$ " x WOF strip. Sub-cut the strip into (3) 4 $\frac{1}{4}$ " squares and • (5) 2" x 3 $\frac{1}{2}$ " strips.

From the Green Wreaths (I), cut:

- (1) 4 $\frac{1}{4}$ " x WOF strip. Sub-cut the strip into (3) 4 $\frac{1}{4}$ " squares and • (5) 2" x 3 $\frac{1}{2}$ " strips.

From the Brown Stars and Hearts (J), cut:

- (4) 2" x WOF strips. Sew the strips together, end to end, and cut (2) 2" x 69 $\frac{1}{2}$ " strips.
- (3) 2" x WOF strips. Sew the strips together, end to end, and cut (2) 2" x 54 $\frac{1}{2}$ " strips.
- (4) 2" x WOF strips. Sew the strips together, end to end, and cut (2) 2" x 72 $\frac{1}{2}$ " strips.
- (3) 2" x WOF strips. Sew the strips together, end to end, and cut (2) 2" x 57 $\frac{1}{2}$ " strips.
- (4) 2" x WOF strips. Sew the strips together, end to end, and cut (2) 2" x 63 $\frac{1}{2}$ " strips.
- (4) 2" x WOF strips. Sew the strips together, end to end, and cut (2) 2" x 66 $\frac{1}{2}$ " strips.
- (1) 4 $\frac{1}{4}$ " x WOF strip. Sub-cut the strip into (9) 4 $\frac{1}{4}$ " squares.
- (1) 3 $\frac{1}{2}$ " x WOF strip. Sub-cut the strip into (3) 3 $\frac{1}{2}$ " squares.
- (8) 2 $\frac{1}{2}$ " x WOF strips for the binding.

From the Blue Sugar Plums (K), cut:

- (1) 4 $\frac{1}{4}$ " x WOF strip. Sub-cut the strip into (3) 4 $\frac{1}{4}$ " squares and (5) 2" x 3 $\frac{1}{2}$ " strips.

From the Cream Novelty Stripe (L):

- Fussy cut (4) 3 $\frac{1}{2}$ " x 38" strips from the length of fabric (LOF), centered on the stripe.

From the Red Pin Dots (M), cut:

- (1) 4 $\frac{1}{4}$ " x WOF strip. Sub-cut the strip into (8) 4 $\frac{1}{4}$ " squares.
- (1) 3 $\frac{1}{2}$ " x WOF strip. Sub-cut the strip into (4) 3 $\frac{1}{2}$ " squares.

From the Blue Stars and Hearts (N), cut:

- (1) 4 $\frac{1}{4}$ " x WOF strip. Sub-cut the strip into (6) 4 $\frac{1}{4}$ " squares.
- (1) 3 $\frac{1}{2}$ " x WOF strip. Sub-cut the strip into (3) 3 $\frac{1}{2}$ " squares and (5) 2" x 3 $\frac{1}{2}$ " strips.

From the Blue Pin Dots (O), cut:

- (1) 4 $\frac{1}{4}$ " x WOF strip. Sub-cut the strip into (6) 4 $\frac{1}{4}$ " squares.
- (1) 3 $\frac{1}{2}$ " x WOF strip. Sub-cut the strip into (3) 3 $\frac{1}{2}$ " squares and (5) 2" x 3 $\frac{1}{2}$ " strips.

From the Red Novelty Stripe (P):

- Fussy cut (4) 3 $\frac{1}{2}$ " x 66" LOF strips, centered on the stripe.

From the Red Tossed Trees (Q), cut:

- (1) 2" x WOF strip. Sub-cut the strip into (5) 2" x 3 $\frac{1}{2}$ " strips.

From the Green Tossed Trees (R), cut:

- (1) 2" x WOF strip. Sub-cut the strip into (5) 2" x 3 $\frac{1}{2}$ " strips.

From the Your Choice, cut:

- (2) 80" x WOF strips. Sew the strips together and trim to 80" x 80" for the backing.

Sewing Instructions

Component Assembly

1. Place (1) 4 $\frac{1}{4}$ " Fabric F square on top of (1) 4 $\frac{1}{4}$ " Fabric A square, right side together. Draw a line across the diagonal of the top square (Fig. 1). Sew $\frac{1}{4}$ " away from each side of the drawn

HOMETOWN HOLIDAY

Pieced Quilt

Page 2

diagonal line (Fig. 1). Cut the two squares apart on the drawn diagonal line (Fig. 2) to make two half-square triangles (Fig. 3). Trim the blocks to measure $3\frac{7}{8}$ " square.

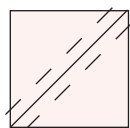


Fig. 1

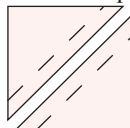


Fig. 2

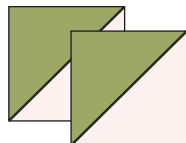


Fig. 3

2. Place one half-square triangle from Step 1 on top of another half-square triangle, right sides together. Make sure the center seam is going in the same direction on both half-square triangles and the Fabric A Triangle in the top block is opposite from the Fabric A in the bottom block (Fig. 4).

3. Draw a diagonal line across the top half-square triangle so that it goes through the sewn seam. Sew $\frac{1}{4}$ " away from both sides of the drawn line (Fig. 5). Cut on the drawn line to make (2) F/A quarter-square triangles (Fig. 6). Trim the F/A quarter-square triangles to measure $3\frac{1}{2}$ " square. Repeat to make (16) F/A quarter-square triangles total.

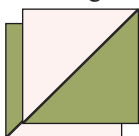


Fig. 4

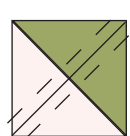


Fig. 5

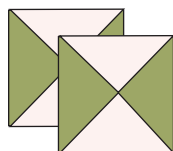


Fig. 6

4. Repeat Steps 1-3 to make the following quarter-square triangle units.

(16) M/F 1/4-square triangles

(12) E/F 1/4-square triangles

(12) J/F 1/4-square triangles

(6) F/E 1/4-square triangles

(6) I/C 1/4-square triangles*

(6) K/G 1/4-square triangles*

(12) N/F 1/4-square triangles

(12) O/F 1/4-square triangles

(6) D/C 1/4-square triangles*

(6) H/G 1/4-square triangles*

(6) F/J 1/4-square triangles*

* You will only need (32 of 36) 1/4-square triangles from these sets.

Block Assembly

5. Follow Figure 7 to sew together (4) F/A quarter-square triangles, (4) $3\frac{1}{2}$ " F squares and (1) $3\frac{1}{2}$ " Fabric A square to complete (1) Star block. Repeat to make (4) Fabric A star blocks total.

6. Repeat Step 7 using four $3\frac{1}{2}$ " F squares, four quarter-square triangles of the featured fabric and one $3\frac{1}{2}$ " square of the featured fabric for each star to make the following the stars (4) M/F stars, (3) N/F stars, (3) E/F stars, (3) O/F stars and (3) J/F stars.

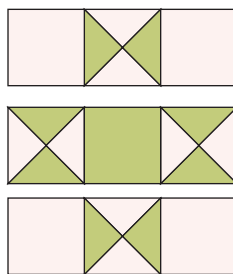


Fig. 7

Quilt Assembly

(Follow the quilt photo while assembling.)

7. Center (1) 2 " x 23 " Fabric B strip on one side of the $18\frac{1}{2}$ " Fabric A square and pin in place. Start sewing the strip a $\frac{1}{4}$ " from the top edge of the Fabric A square and stop a $\frac{1}{4}$ " from the bottom edge. DO NOT TRIM THE EXCESS. Repeat with the opposite side.

8. Repeat Step 7 and sew (1) 2 " x 23 " Fabric B strip to the top and to the bottom of the Fabric A square, making sure to stop and start $\frac{1}{4}$ " away from each end of the Fabric A square. To miter

each corner, fold the Fabric A square on a diagonal, wrong side together. This should line up the strips from adjacent sides.

9. Starting at the sewn seam draw a 45° line to the edge of the fabric. Sew on the drawn line. Trim the excess fabric leaving a $\frac{1}{4}$ " seam. Repeat this step with the remaining corners to make the center block.

10. Sew (7) various quarter-square triangle blocks together to make one side border. Repeat to make a second side border and sew one strip to each side of the center block.

11. Sew (9) various quarter-square triangles together to make the top strip. Repeat to make the bottom strip. Sew the strips to the top and bottom of the center block to make the quilt top.

12. Repeat steps 7-9 to add the (4) 2 " x 33 " Fabric B borders to the quilt top with mitered corners.

13. Repeat Steps 7-9 to sew (4) $3\frac{1}{2}$ " x 38 " Fabric L borders to the quilt top with mitered corners.

14. Sew (4) various star blocks together to make one side border. Repeat to make a second side border. Sew one border to each side of the quilt top.

15. Sew one (6) various star blocks together to make the top border. Repeat to make the bottom border. Sew the borders the quilt top.

16. Sew one 2 " x $54\frac{1}{2}$ " Fabric J strip to each side of the quilt top. Sew one 2 " x $57\frac{1}{2}$ " Fabric J strip to the top and bottom of the quilt top.

17. Repeat Step 7-9 to add (4) $3\frac{1}{2}$ " x 66 " Fabric P strips to the quilt top with mitered corners to the quilt top.

18. Sew one 2 " x $63\frac{1}{2}$ " Fabric J strip to each side of the quilt top. Sew one 2 " x $66\frac{1}{2}$ " Fabric J strip to the top and bottom of the quilt top.

19. Follow Quilt Photo and sew (22) various 2 " x $3\frac{1}{2}$ " strips together, end to end, to make one side border. Repeat to make a second side border and sew one border to each side of the quilt top.

20. Follow Quilt Photo and sew (23) various 2 " x $3\frac{1}{2}$ " strips together, end to end, to make the top border. Repeat to make the bottom border. Sew the borders to the quilt top.

21. Sew (1) 2 " x $69\frac{1}{2}$ " Fabric J strip to each side of the quilt top. Sew (1) 2 " x $72\frac{1}{2}$ " Fabric J strip to the top and bottom of the quilt top.

22. Layer and quilt as desired.

23. Sew the (8) $2\frac{1}{2}$ " x WOF Fabric J strips together, end to end with 45 degree seams, to make the binding. Fold this long strip in half lengthwise with wrong sides together and press.

24. Bind as desired.