

Hometown Holiday

Applique Quilt



A Free Project Sheet From



Henry Glass & Co., Inc.



facebook

Finished Quilt Size: 14 1/2" x 17 1/2"
49 West 37th Street, New York, NY 10018
tel: 212-686-5194 fax: 212-532-3525
Toll Free: 800-294-9495
www.henryglassfabrics.com

HOMETOWN HOLIDAY

Finished Quilt Size: 14 ½" x 17 ½"

Applique Quilt

Fabrics in the Collection



8146-66

Green Wreaths



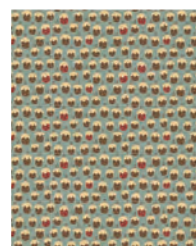
8146-44

Cream Wreaths



8145-66

Green Sugar Plums



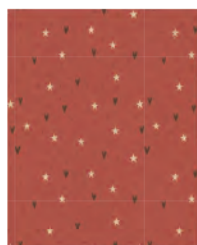
8145-11

Blue Sugar Plums



8144-38

Brown Stars & Hearts



8144-22

Red Stars & Hearts



8144-11

Blue Stars & Hearts



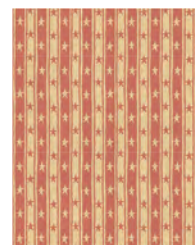
8143-88

Red Stripe



8143-38

Brown Stripe



8143-22

Peach Stripe



8142-88

Red Pin Dots



8142-44

Cream Pin Dots



8142-11

Blue Pin Dots



8141-88

Red Tossed Trees



8141-66

Green Tossed Trees



8141-44

Cream Tossed Trees



8140-88

Red Novelty Stripe



8140-44

Cream Novelty Stripe



8139-66

Large Novelty

HOMETOWN HOLIDAY

Page 1

Applique Quilt

Materials

1/8 yard	Red Stars and Hearts	8144-22
1/4 yard	Cream Tossed Trees	8141-44
1/4 yard	Blue Sugar Plums	8145-11
Fat 1/4	Cream Wreaths	8146-44
Fat 1/8	Cream Pin Dots	8142-44
Fat 1/8	Green Wreaths	8146-66
Fat 1/8	Green Tossed Trees	8141-66
Fat 1/8	Blue Pin Dots	8142-11
Fat 1/8	Peach Stripe	8143-22
Fat 1/8	Red Pin Dots	8142-88
1/3 yard	Brown Stars and Hearts	8144-38
3/4 yard	Backing (Your Choice)	

Cutting Instructions

Please note: all strips are cut across the width of fabric (WOF) from selvage to selvage edge.

From the Red Stars and Hearts (A), cut:

- (1) 2 1/4" x WOF strip. Sub-cut the strip into (4) 2 1/4" squares.
- See instructions to cut (1) scarf.

From the Cream Tossed Trees (B), cut:

- (1) 2 1/4" x WOF strip. Sub-cut the strip into (26) 1 1/2" x 2 1/4" strips.

From the Blue Sugar Plums (C), cut:

- (1) 2 1/4" x WOF strip. Sub-cut the strip into (24) 1 1/2" x 2 1/4" strips.

From the Cream Wreaths (D), cut:

- (1) 9 1/2" x 12 1/2" strip.

From the Cream Pin Dots (E), Green Wreaths (F), Green Tossed Trees (G), Blue Pin Dots (H), Peach Ticking Star Stripe (I) and Red Pin Dots (J):

- Refer to the quilt photo and templates for applique shapes

From the Brown Stars and Hearts (K), cut:

- (2) 1 1/2" x WOF strip. Sub-cut the strip into (2) 1 1/2" x 12 1/2" strips and two 1 1/2" x 11 1/2" strips. See instructions to cut (2) windows.
- (2) 2 1/2" x WOF strips for the binding.

From the Your Choice, cut:

- (1) 20" x 23" strip for the backing.

Sewing Instructions

1. Using your favorite method, prepare each shape for applique. Refer to the quilt photo to arrange and press the shapes onto the 9 1/2" x 12 1/2" Fabric D background.
2. Using your favorite method hand embroider the words, tree trunks, snowman arms, mouth, eyes and nose to complete the appliqued center block.

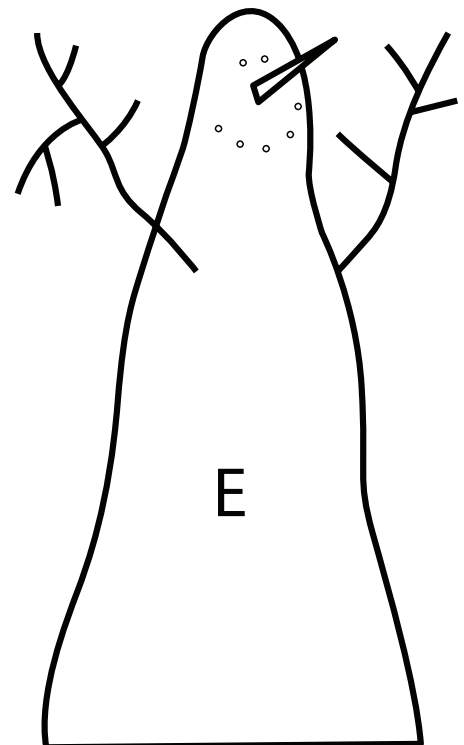
Quilt Top Assembly

(Refer to the quilt photo while assembling.)

3. Sew (1) 1 1/2" x 12 1/2" Fabric K strip to each side of the center block. Sew (1) 1 1/2" x 11 1/2" Fabric K strip to the top and bottom of the center block.
4. Sew (11) assorted 1 1/2" x 2 1/4" strips together, alternating them, to make on side border. Repeat to make a second side border. Sew the borders to each side of the center block.
5. Sew (14) assorted 1 1/2" x 2 1/4" strips and two 2 1/4" Fabric A squares together to make the top border. Repeat to make the bottom border. Sew the borders to the center block.
6. Layer and quilt as desired.
7. Sew the (2) 2 1/2" x WOF Fabric K strips together, end to end with 45° seams, to make the binding. Fold this long strip in half lengthwise with wrong sides together and press.

8. Bind as desired

Note: All templates are reversed except for Sign Block.



HOMETOWN HOLIDAY

Applique Quilt

Page 2

